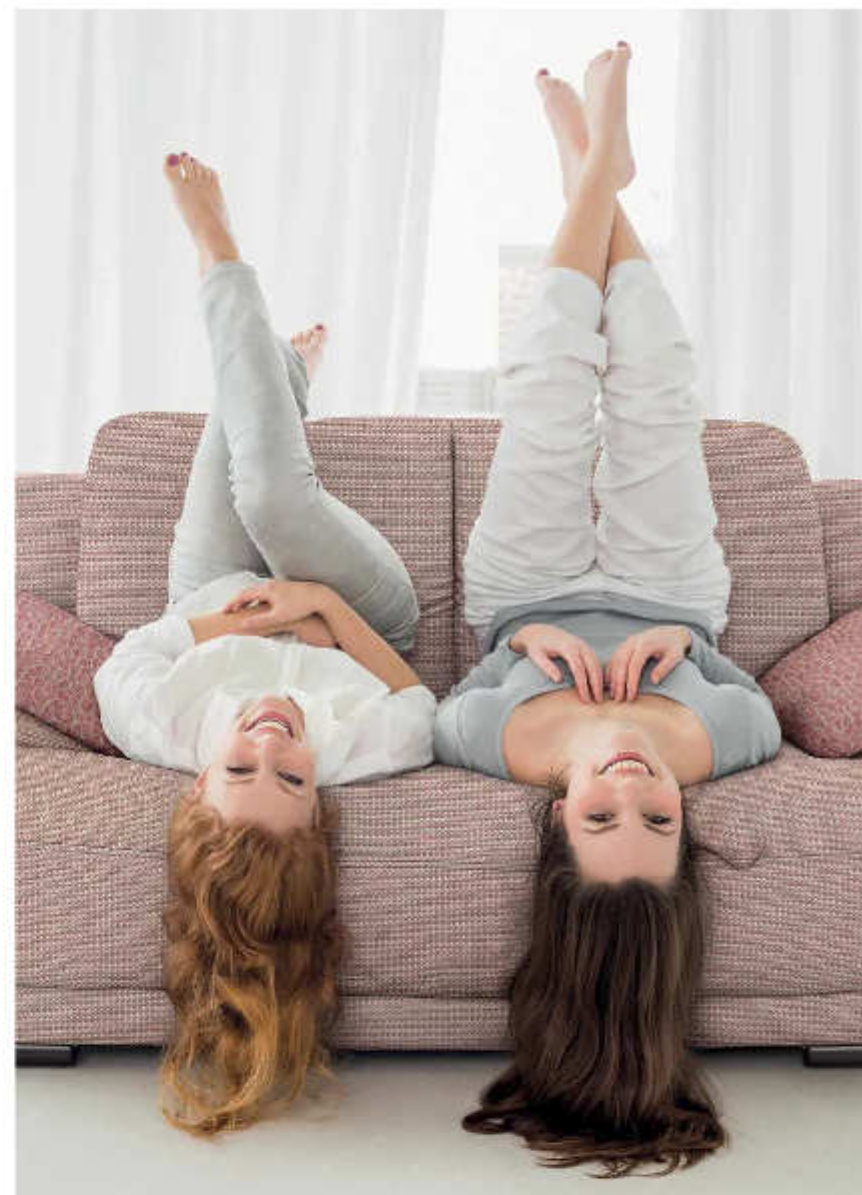


Topographic Collection

PRODUCTO FABRICADO EN ESPAÑA - PRODUCTO FABRICADO EN ESPAÑA - PRODUCTO FABRICADO EN ESPAÑA



Topographic Collection





Piel SA, fundada en 1976, es una empresa textil con una área de producción de más de 70.000m². Certificada por SGS para la Norma de Calidad y Satisfacción del Cliente ISO 9001:2008 todos nuestros tejidos se someten a rigurosos ensayos de calidad antes de su envío para asegurar un excelente rendimiento, llegando a su superar los estándares de las normas establecidas por organismos internacionales.

Piel SA, founded in 1976, is a textile company with 70.000m² production area, certified by SGS for the Quality and Customer Satisfaction Standard ISO 9001:2008. All of our fabrics are put through a rigorous test criteria before dispatch to ensure excellent performance and exceeding the regulatory standards.



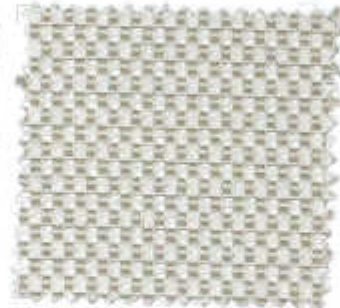
KERAN C/20



CERSEI C/30



TYBER C/26



ARENSICA C/26



TYRON C/28



MORTERO C/30



LAŒCEL C/30



MORTERO C/70



LAŒCEL C/70



KERAN C/70



CERSEI C/70



TYRON C/70



TYBER C/70



ARENSICA C/70



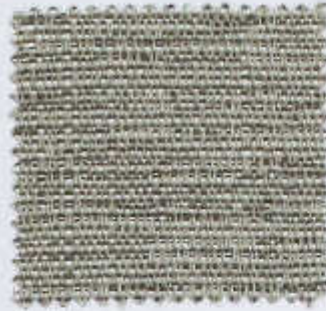
KERRAN C/20



ARENSICA C/20



TYRION C/20



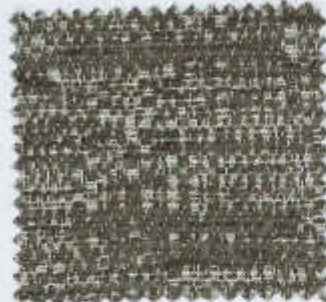
WORTERD C/10



CERSEI C/20



TYRION C/20



LANCEL C/20



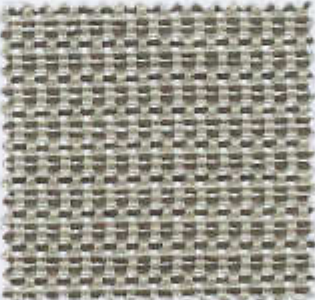
LANCEL C/20



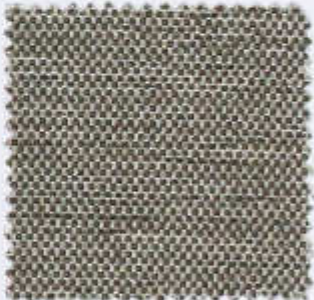
PORTERD C/20



TYRION C/10



ARENSICA C/10



TYREX C/10



CERSEI C/10



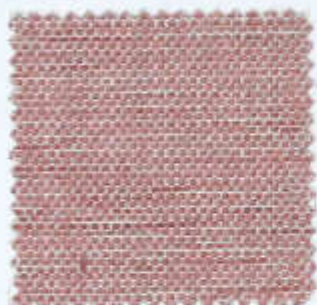
KERRAN C/10



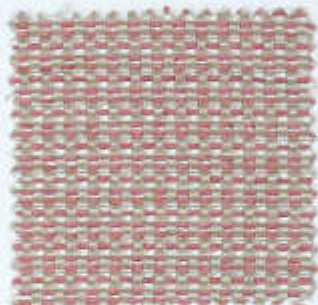
KERAN C/32



CERSEI C/32



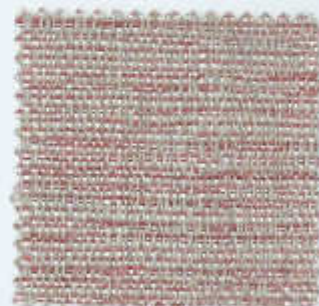
TYREK C/32



ARENSKA C/32



TYRON C/33



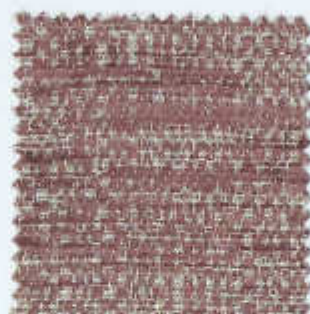
WORTERO C/32



LANGEL C/33



WORTERO C/33



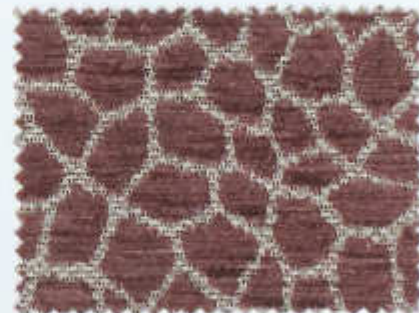
LANGEL C/32



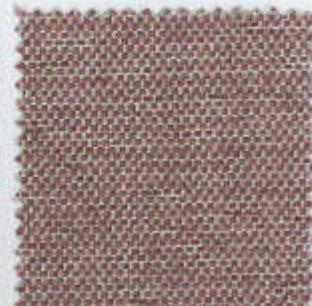
KERAN C/33



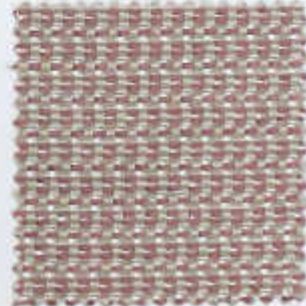
CERSEI C/33



TYRON C/33



TYREK C/33



ARENSKA C/33





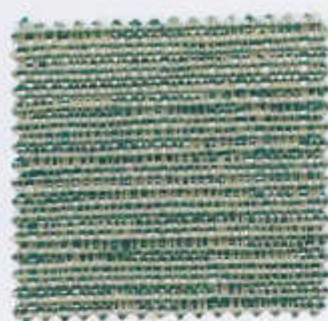
KERAN C/00



ARENICA C/00



TYRIS C/00



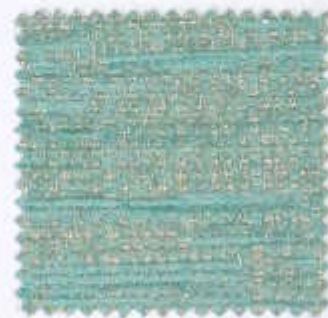
HORTERO C/00



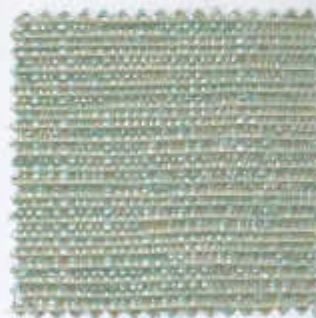
CERSEI C/00



TYRION C/00



LANCEL C/00



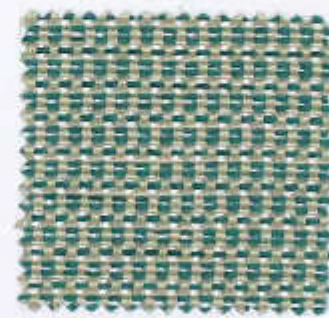
HORTERO C/00



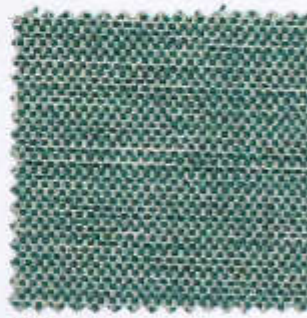
LANCEL C/01



TYRION C/01



ARENICA C/01



TYREK C/01



CERSEI C/01



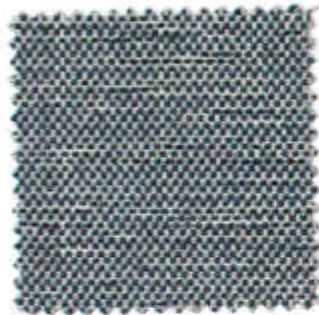
KERAN C/01



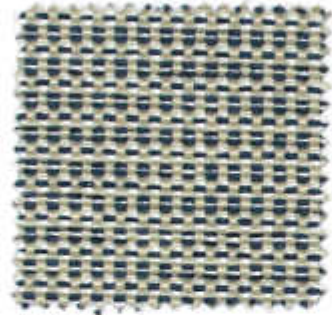
KERAN C/80



CERSEI C/80



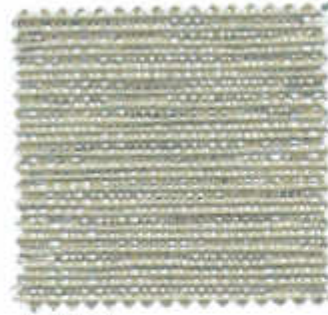
TYRIS C/80



ARENICA C/80



TYRION C/80



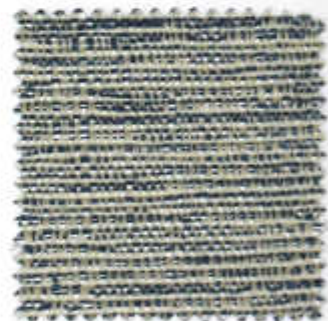
MORTERO C/80



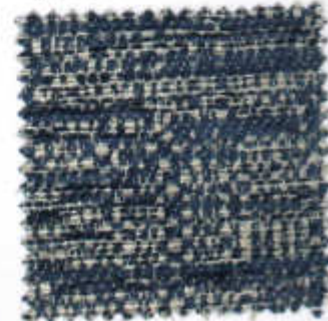
LANCEL C/80



KERAN C/80



MORTERO C/80



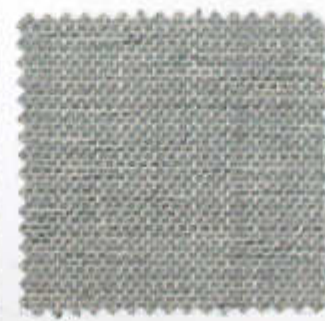
LANCEL C/80



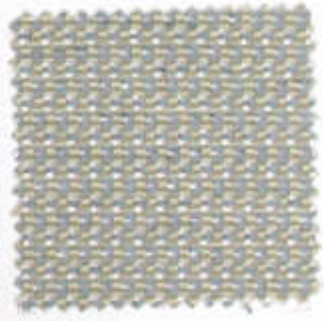
CERSEI C/80



TYRION C/80



TYRIS C/80



ARENICA C/80

Topographic Collection



Green Forest 0x40 cm



Green Forest 0x40 cm



Green Forest 0x40 cm

CARACTERÍSTICAS TÉCNICAS / TECHNICAL CHARACTERISTICS / CARATTERISTICHE TECNICHE

NOMBRE NOME NOM	COMPOSICIÓN COMPOSIZIONE COMPOSITION	ANCHO (cm) LARGHEZZA (cm) LENGTH (cm)	GRANDE (cm) GRANDE (cm) GRANDE (cm)	ABRASIÓN (mm) RESISTENZA ALL'USURA TEST EN ABRASSION (mm)	PELLEJO PELLEJO PELLEJO	COSTURAS (mm) RIFINITURA COSTURE FINISHING COSTURES
GRISO	31% PES-69% PAN	140	340	25.000	5	3,5x5,5
GRAN	31% PES-69% PAN	140	340	37.000	0	5,5x5,5
TYSON	31% PES-69% PAN	140	340	28.000	4-2	4,0x3,5
LANCEL	31% PES-69% PAN	140	340	45.000	4-3	3,8x3,5
TYNEX	31% PES-69% PAN	140	310	27.000	5	4,0x3,5
ARDEGA	39% PES-61% PAN-4% MPA	140	320	40.000	4-3	4,8x3,5
MORTERO	31% PES-69% PAN-4% MPA	140	400	27.000	4-2	3,8x3

 LOS DATOS DE ABRASIÓN BASADOS EN EL MÉTODO DE LEIJON, EVITANDO SER VALORES MEDIDOS Y REGISTROS
 VALOR MEDIDO EN EL LABORATORIO DE ABRASIÓN. SE HA USADO UN CEMENTO DE COMPOSICIÓN DE CLASIFICACIÓN CEM III 32,5 N.
 LOS DATOS DE RESISTENCIA AL AGUANTE SON DATOS DE LABORATORIO. LOS DATOS DE RESISTENCIA AL AGUANTE SON VALORES MEDIDOS Y REGISTROS.
 RESISTENZA ALL'USURA (mm) - PELLEJO (mm) - COSTURE (mm)

PELLEJO (mm) - COSTURE (mm) - RESISTENZA ALL'USURA (mm) - RESISTENZA ALL'USURA (mm) - RESISTENZA ALL'USURA (mm)



Lavado con agua a 30°C
 Clean with water at 30°C
 Lavaggio con acqua a 30°C



Acido lavado con agua con peróxido de hidrógeno
 Clean with water with hydrogen peroxide
 Lavaggio con acqua con perossido di idrogeno



No use of fire
 No use of fire
 No use of fire



Pólvora al fuego a 110°C
 Fire at 110°C
 Pólvora al fuoco a 110°C



No use of fire
 No use of fire
 No use of fire

Para la información del producto, consulte el sitio web de la empresa o el representante autorizado.
 For the information of the product, consult the company website or the authorized representative.
 Per la informazione del prodotto, visitate il sito web dell'azienda o il rappresentante autorizzato.

PRODUCTO FABRICADO EN ESPAÑA / PRODUCT MADE IN SPAIN / PRODOTTO FABBRICATO IN SPAGNA



PEL SA - Avda. de España, 10 - 46100 Sagunto - Valencia
 +34 91 227 43 00
 info@pel.es