

SAMOA INDOOR & OUTDOOR

SAMOA

INDOOR & OUTDOOR



PIEL S.A. - Avda. Del Cordell de Múrcia, 6 - 46890 AGULLENT - SPAIN
+34 962 907 400
www.piel.sa.es



SAMOA

INDOOR & OUTDOOR



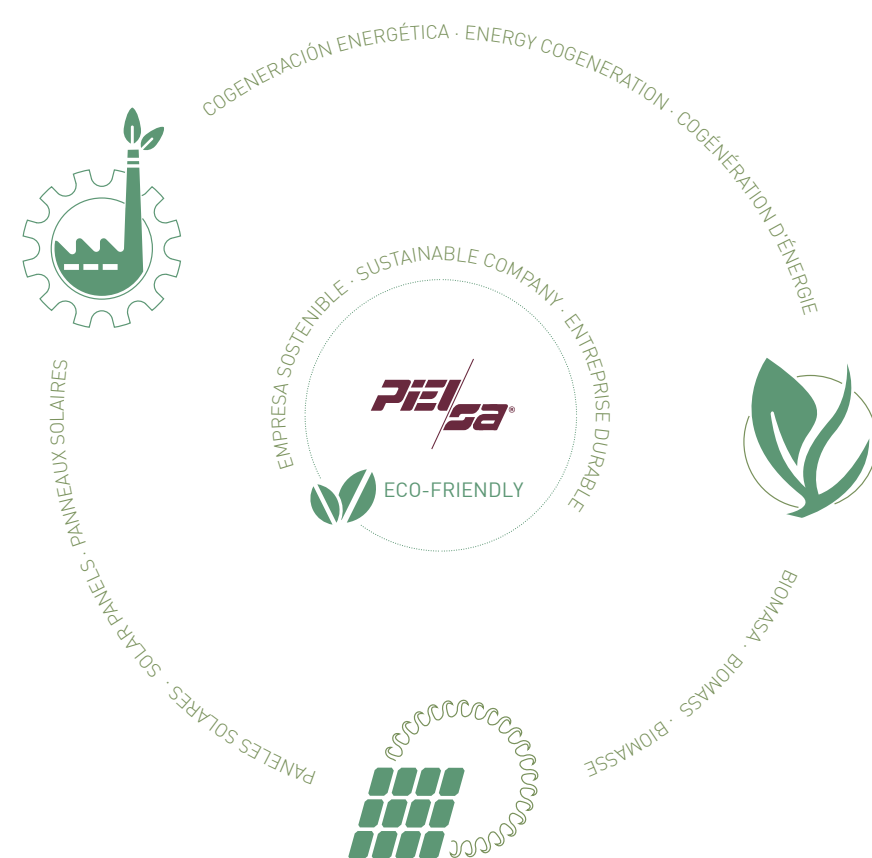
Tejiendo por un mundo mejor

Piel SA, es una empresa comprometida con las personas, la calidad, el servicio y el planeta.



Weaving for a better world

Piel SA, is a company committed to people, quality, service and the planet.



Piel SA, fundada en 1976, es una empresa textil con una área de producción de más de 70.000m², certificada por SGS para la Norma de Calidad y Satisfacción del Cliente **ISO 9001: 2015**.

Piel SA, founded in 1976, is a textile company with 70.000m² production area, certified by SGS for the Quality and Customer Satisfaction Standard **ISO 9001:2015**.



SPIRALIA C/86



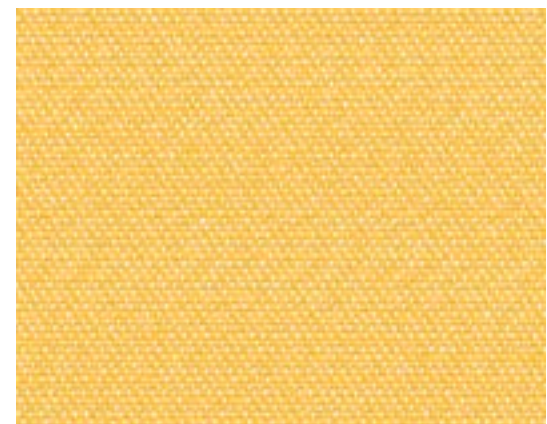
PANELA C/86



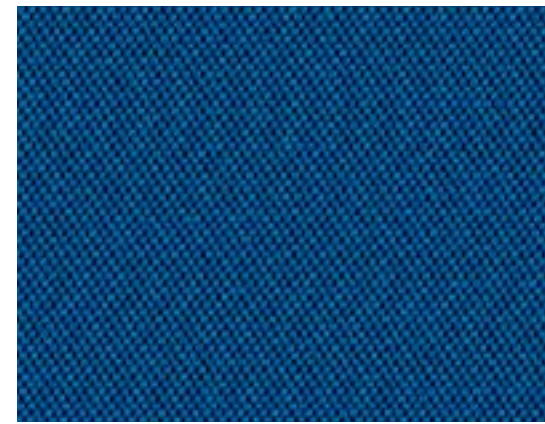
GENISTA C/80



GENISTA C/62



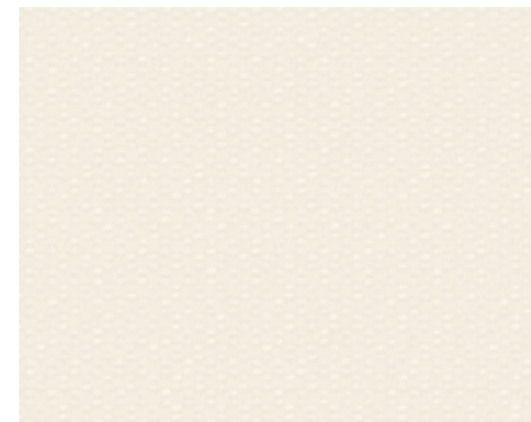
HINOJO C/80



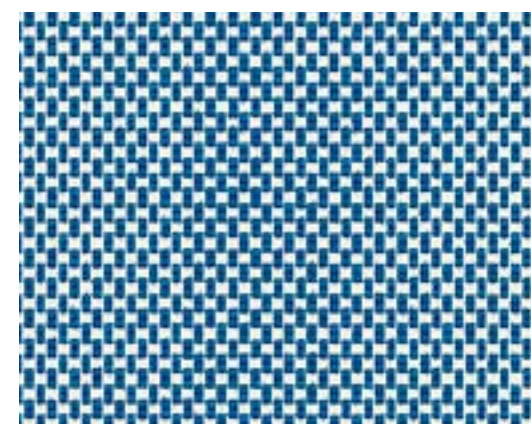
HINOJO C/62



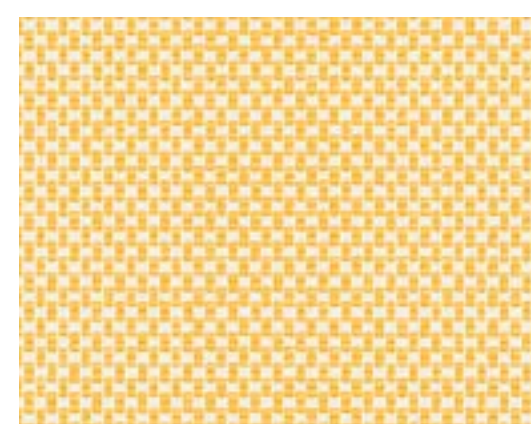
HINOJO C/26



TEJO C/26



TEJO C/62



TEJO C/80



CAMBUR C/86

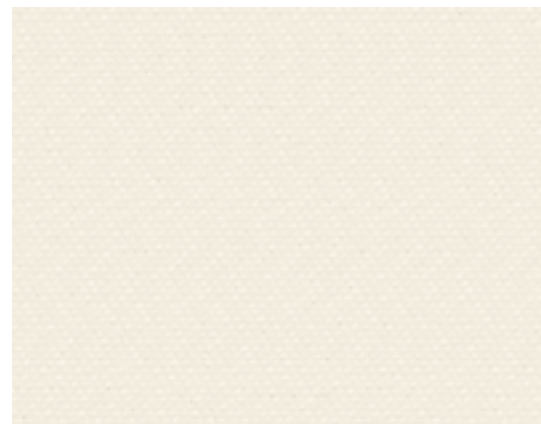




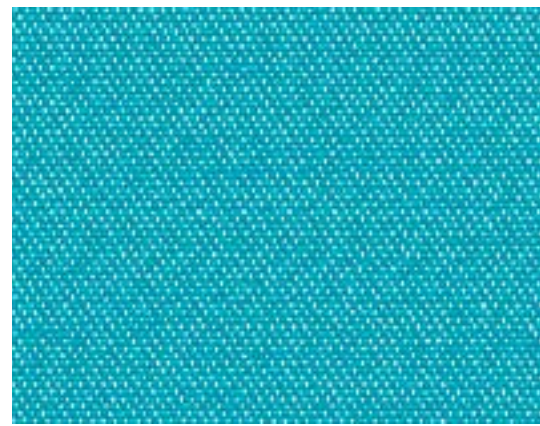
SPIRALIA C/64



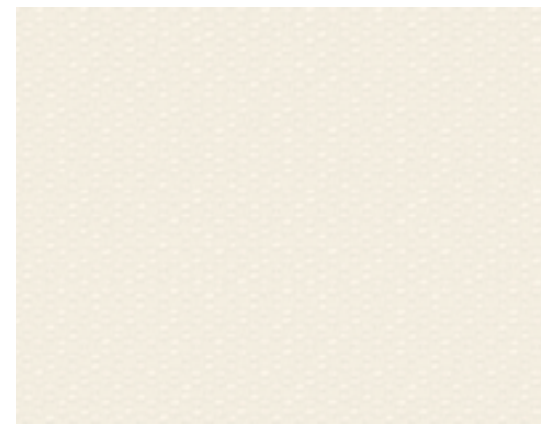
TEJO C/64



HINOJO C/26



HINOJO C/64



TEJO C/26



GENISTA C/64



GENISTA C/60



PANELA C/64

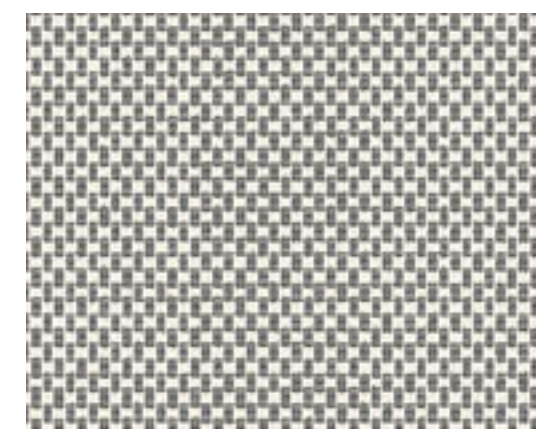


CAMBUR C/64

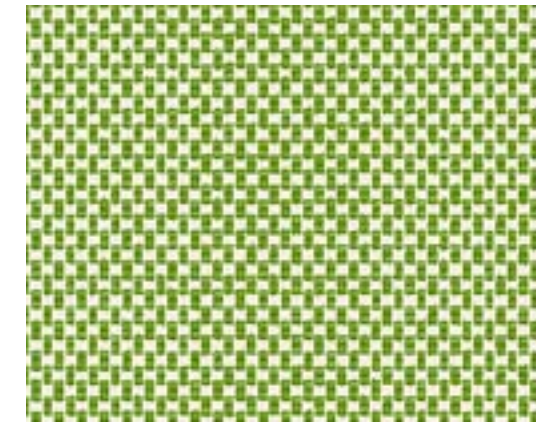




SPIRALIA C/52



TEJO C/70



TEJO C/54



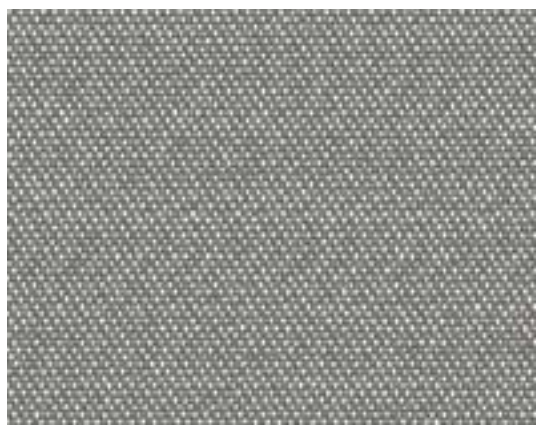
TEJO C/20



GENISTA C/70



GENISTA C/50



HINOJO C/70



HINOJO C/54



HINOJO C/20



PANELA C/52



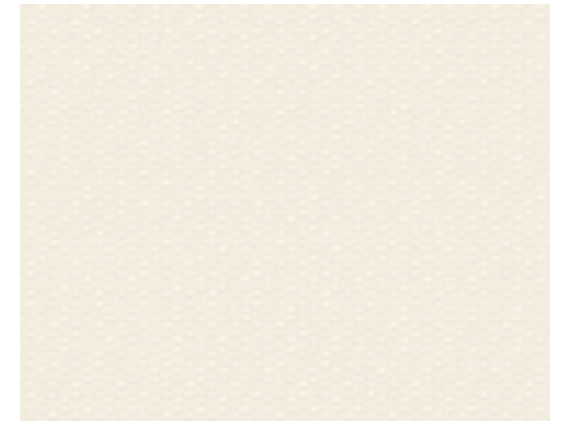
CAMBUR C/52



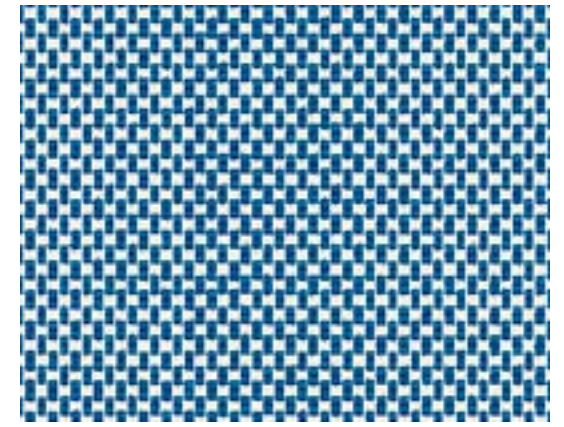
GENISTA C/20



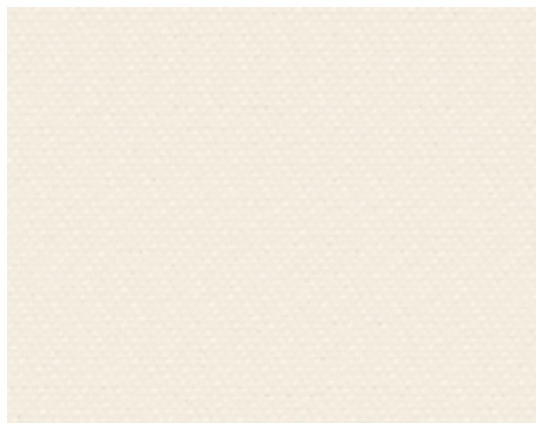
SPIRALIA C/66



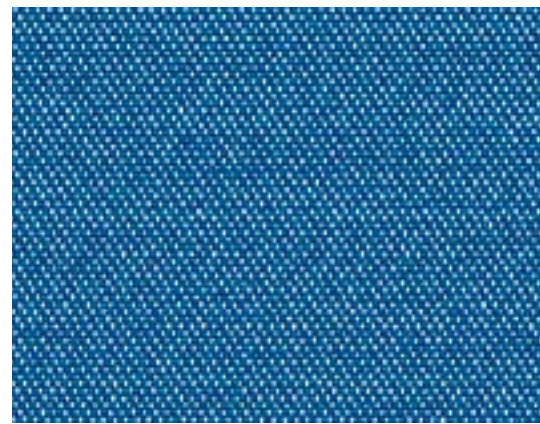
TEJO C/26



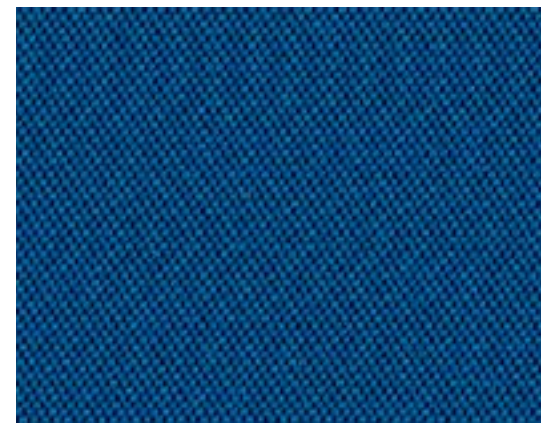
TEJO C/62



HINOJO C/26



HINOJO C/60



HINOJO C/62



GENISTA C/66



GENISTA C/62



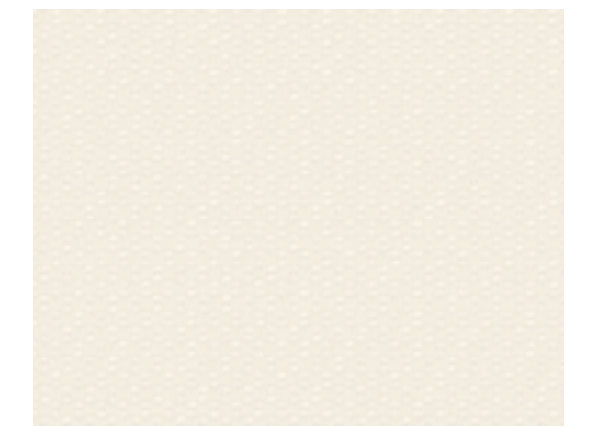
PANELA C/66



CAMBUR C/66



SPIRALIA C / 22



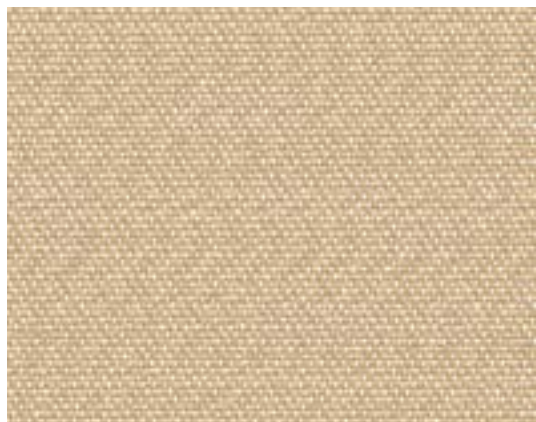
TEJO C / 26



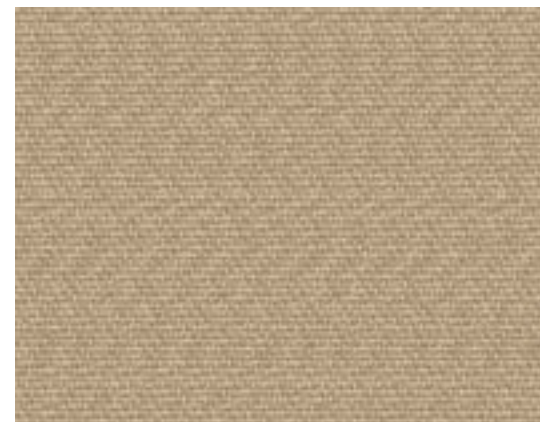
TEJO C / 24



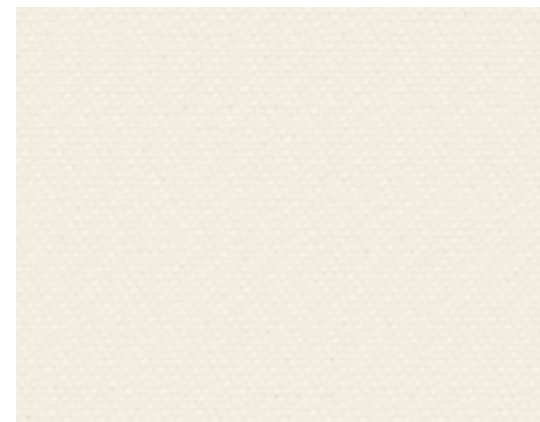
TEJO C / 20



HINOJO C / 20



HINOJO C / 24



HINOJO C / 26



GENISTA C / 20



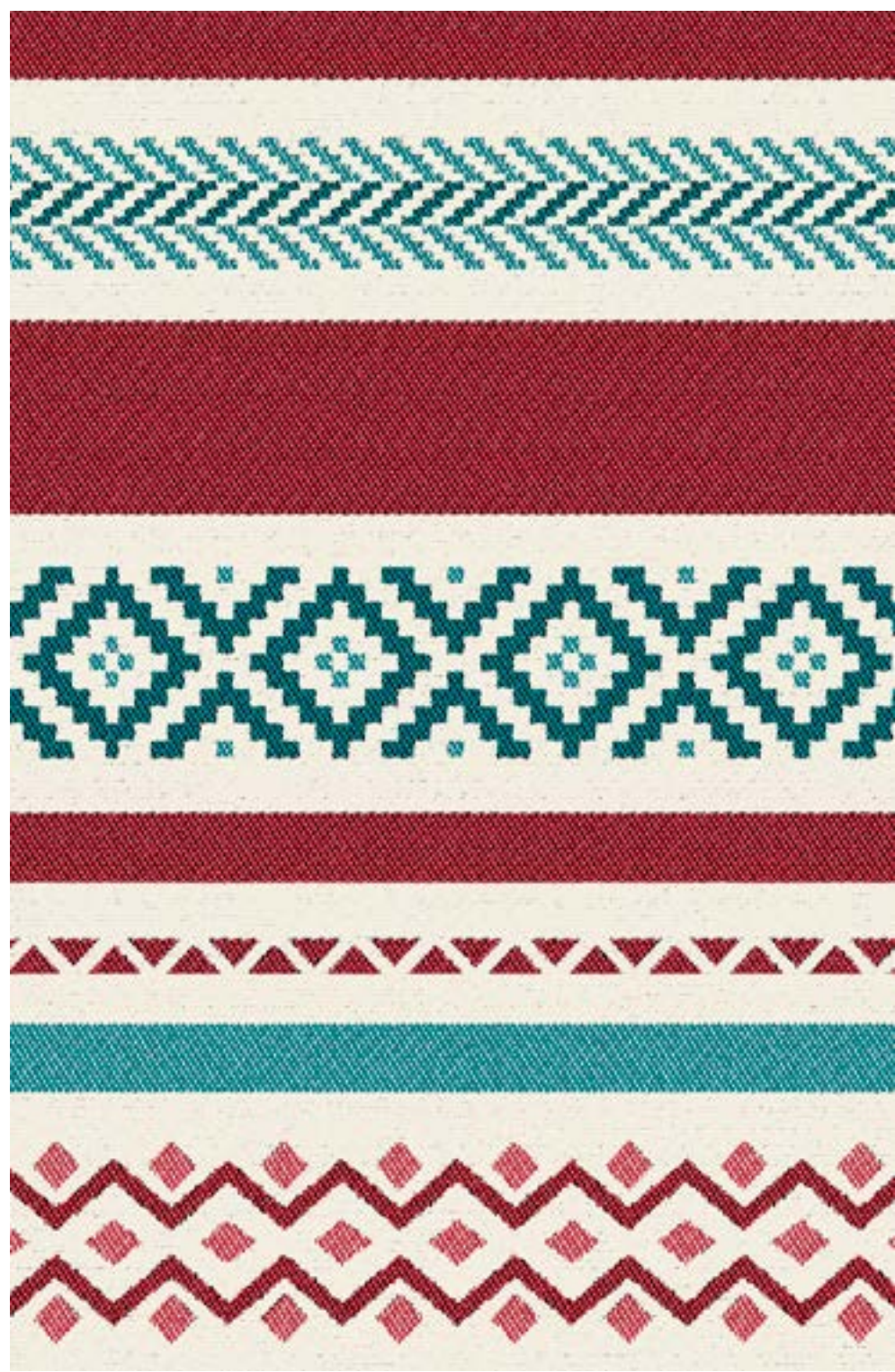
GENISTA C / 24



CAMBUR C / 22



PANELA C / 22



PANELA C/46



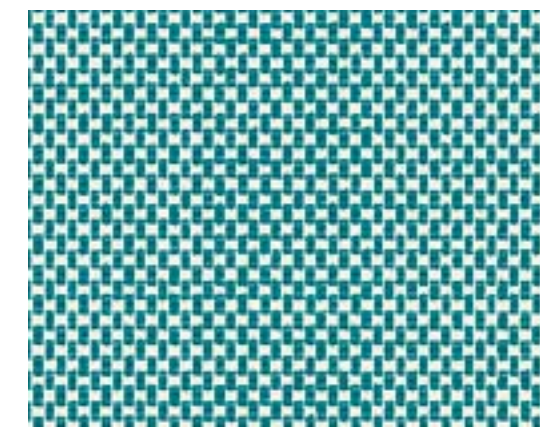
GENISTA C/42



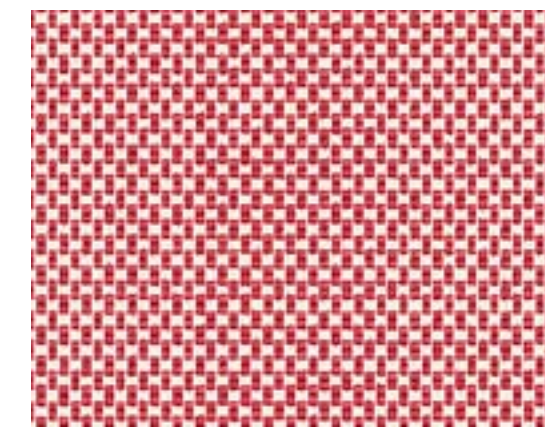
GENISTA C/68



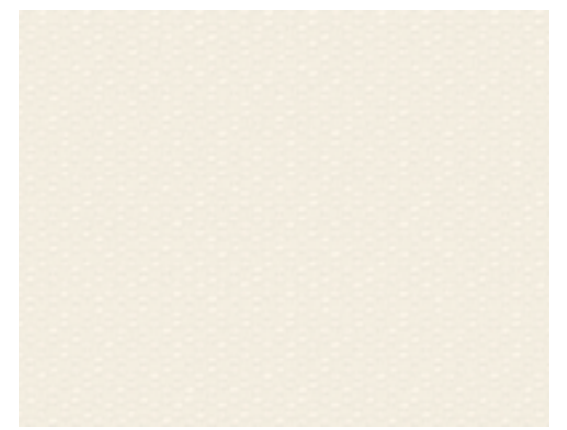
CAMBUR C/46



TEJO C/68



TEJO C/42



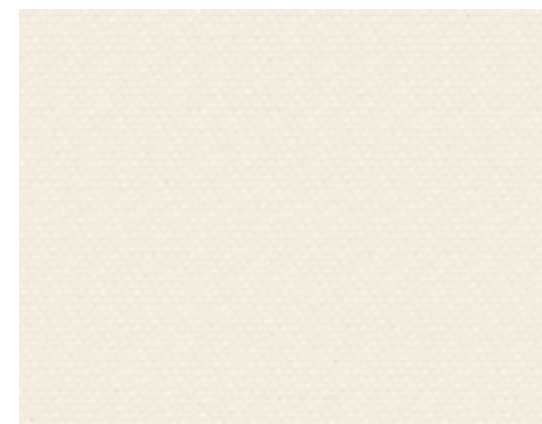
TEJO C/26



SPIRALIA C/46



HINOJO C/68



HINOJO C/26



HINOJO C/42

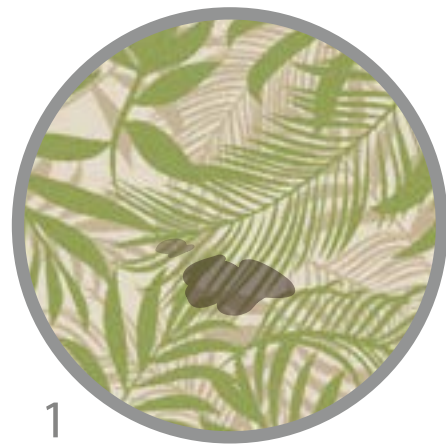


SAMOA

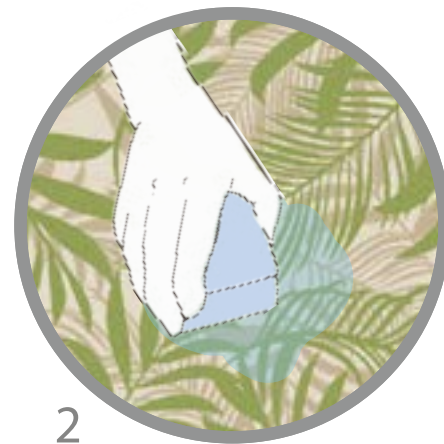
INDOOR & OUTDOOR



1. Retira el exceso de producto de la tapicería.
1. Remove excess product from upholstery.
1. Enlever le produit excédentaire du tissu.



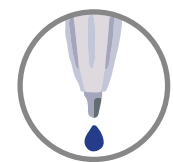
2. Limpiar la mancha con un paño húmedo.
2. Clean stain with a damp cloth.
2. Nettoyez la tache avec un chiffon humide.



3. Dejar secar la tapicería al aire.
3. Allow the upholstery to become air-dry.
3. Laisser sécher le tissu dans l'air



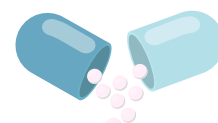
OTRAS POSIBILIDADES DE ACABADO BAJO CONSULTA
OTHER FINISHINGS AVAILABLE UPON REQUEST



Stain release
Antiboli



CO2Pure
converts CO₂ - NOX - VOC'S into minerals



Encapsulated
Fragrance, cosmetics,
antistress, aloe vera



Biocides
antibacterial, anti-dust mites,
antivirus, antifungal

FR Not solid to wash
UNE-EN13772/13773
NF P 92-503/504/505



FR Solid to wash
BS5852
UNE-1021

SAMOA

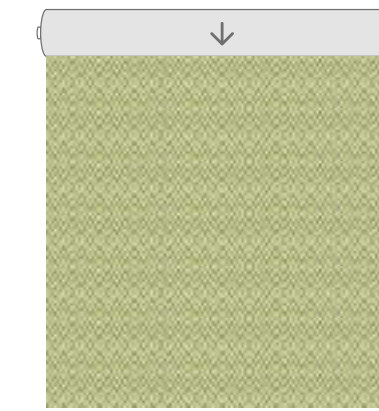
INDOOR & OUTDOOR



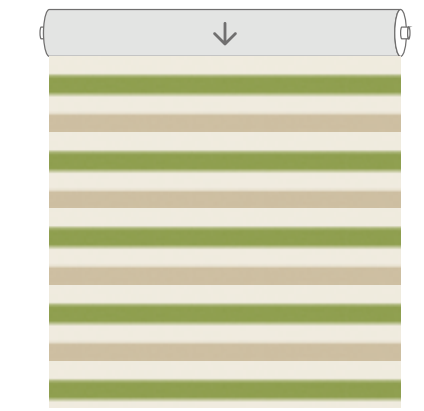
CAMBUR. Rapport 35x35 cm



PANELA. Rapport 35x35 cm



GENISTA. Rapport 3,5x10,4 cm



SPIRALIA. Rapport 15,2 cm

CARACTERÍSTICAS TÉCNICAS TECHNICAL CHARACTERISTICS CARACTÉRISTIQUES TECHNIQUES

NOMBRE NAME NOM	CAMBUR	PANELA	GENISTA	SPIRALIA	HINOJO	TEJO
COMPOSICIÓN COMPOSITION COMPOSITION	55%PP 45%PES	55%PP 45%PES	55%PP 45%PES	55%PP 45%PES	55%PP 45%PES	31%PP 69%PES
ANCHO (cm) WIDTH (cm) LARGEUR (cm)	140					
GRAMAJE (g/m ²) WEIGHT (g/m ²) GRAMMAGE (g/m ²)	309	305	310	302	310	246
ABRASIÓN (ciclos) ABRASION TEST (cycles) TEST D'ABRASION (cycles)	45.000	44.000	42.000	41.000	43.000	45.000
PILLING PILLING PILLING	5					
COSTURAS (u/t) SEAM STRENGTH (warp/weft) RES. DES COUTURES (c/t)	3/4	6,7/4,8	4/3	6/5,8	5,1/5,2	5/6
ACABADO FINISH FINITION	PIE/SA CLEAN					
INSTRUCCIONES LAVADO CLEANING INSTRUCTIONS INSTRUCTIONS DE LAVAGE						
SOLIDEZ A LA LUZ LIGHT FASTNESS SOLIDITÉ À LA LUMIÈRE						
APLICACIONES APPLICATIONS APPLICATIONS						

ABRASION TEST: UNE-EN ISO 12947-2 PILLING: UNE-EN ISO 12945-2 SEAM STRENGTH: UNE-EN ISO 13936-2 LIGHT FASTNESS: UNE-EN ISO 105-B04

